

*4th SUNDAY after
PENTECOST
June 21, 2026*



Our vision:

*“Joy is a spiritual community sharing the
love of Christ in a challenging world.”*

J O Y Lutheran
Church

*7045 SW 83rd Place
Ocala, Florida 34476
Tel. 352.854.4509*

**W
E
L
C
O
M
E**

Pastor Arthur Wuertz

352.854.4509 ext. 3

email: joyocalafl@gmail.com

web site: www.joylcocala.org

www.facebook.com/joylutheranchurch.ocala

www.instagram.com/joylutheranchurch.ocala

Joy Blog: <https://joyocala.blog>

Photos & Videos to: Joyocalaconnect@gmail.com

*Our mission is to share
the Good News of grace and love with
all through worship, service, and fellowship.*

Worship text is on the screen.
**Indicates Congregation Stands if able*
Items in Italics are only for the service indicated
STATION COMMUNION IS OBSERVED TODAY

Prelude—"Trust and Obey" -arr. Sandra Eithun

***Confession and Forgiveness**

***Gathering Hymn: ELW # 876 -"Let The Whole Creation Cry"**

***Greeting**

***Hymn of Praise: ELW page 149-"This Is The Feast"**

***Prayer of the Day**

Children's Message

First Reading: Jeremiah 20: 7-13

Psalm: 69:7-18 (*Refrain and Psalm on Page 4 & 5*)

Second Reading: Romans 6:1b-11

Special Music: "Poured Out For You" -com. Austin North

***Gospel Acclamation: -ELW page 151-"Alleluia"**

***Gospel: Matthew 10:24-39**

Today's Message is Given by: Pastor Art Wuertz

***Hymn of the Day: CCLI "How Great Is Our God" (Blue Binder)**

***Apostles' Creed**

***The Prayers of the People**

***Passing of the Peace**

***Offertory: "The Lamb" -com. Gerald P. Coleman**

***Congregational Offertory: ELW # 588**

"There's A Wideness In God's Mercy" verse 3

***Offertory Prayer**

***The Great Thanksgiving**

***"It is indeed right....."**

***Sanctus: - ELW page 153-"Holy, Holy, Holy Lord"**

***Eucharistic Prayer**

***Words of Institution**

***The Lord's Prayer**

***Invitation to Communion**

***Lamb of God: ELW page 154-"Lamb Of God"**

Distribution Hymns:

ELW # 796-"How Firm A Foundation"

CCLI # 16880-"Because He Lives" - (Blue Binder)

ELW # 856-"How Great Thou Art"

***Communion Blessing**

***Prayer after Communion**

***Blessing**

***Sending Hymn: ELW # 812-"Faith of Our Fathers"**

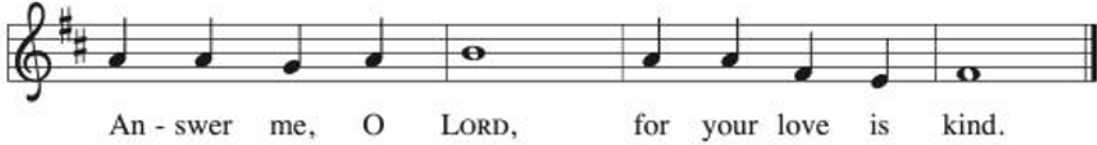
***Sending**

***Postlude-"Open Now Thy Gates of Beauty" arr. Narj Bender**

~~~~~

*Please note the blue binders are underneath the chairs and  
the music is arranged in alphabetical order.*

## Psalm 69:7-18



Psalm 69:16

Psalm refrain reproduced from *Psalter for Worship Year A* © 2007 Augsburg Fortress.  
May be reproduced by permission for local use only.

***R: Answer me, O LORD, for your love is kind. (Ps. 69:16)***

<sup>7</sup> Surely, for your sake I have suf- | fered reproach,  
and shame has cov- | ered my face.

<sup>8</sup> **I have become a stranger to | my own kindred,  
an alien to my | mother's children.**

<sup>9</sup> Zeal for your house has eat- | en me up;  
the scorn of those who scorn you has fall- | en upon  
me.

<sup>10</sup> **I humbled my- | self with fasting,  
but that was turned to | my reproach. R**

<sup>11</sup> I put on | sackcloth also,  
and became a by- | word among them.

**<sup>12</sup> Those who sit at the gate mur- | mur against me,  
and the drunkards make | songs about me.**

<sup>13</sup> But as for me, this is my prayer to you, at the time you  
have | set, O LORD:

“In your great mercy, O God, answer me with your  
un- | failing help.

**<sup>14</sup> Save me from the mire; do not | let me sink;  
let me be rescued from those who hate me and  
out of | the deep waters. R**

<sup>15</sup> Let not the torrent of waters wash over me, neither  
let the deep swal- | low me up;  
do not let the pit shut its | mouth upon me.

**<sup>16</sup> Answer me, O LORD, for your | love is kind;  
in your great compassion, | turn to me.**

<sup>17</sup> Hide not your face | from your servant;  
be swift and answer me, for I am | in distress.

**<sup>18</sup> Draw near to me | and redeem me;  
because of my enemies de- | liver me. R**

***PLEASE REMAIN FOR THE  
SPECIAL CONGREGATIONAL MEETING  
TODAY, AT 11:30 AM IN THE SANCTUARY.***

**The only item addressed is the 2-5 Year Project proposal.  
You should have received, from council,  
an email with the proposal attached.**

**All voting members are asked to remain  
and let their voices be heard.**

**WOMEN'S ENRICHMENT GROUP**

**JUNE, JULY, AUGUST  
SATURDAY'S AT 10AM  
ALL ARE WELCOME!!!**

**NO RESERVATIONS REQUIRED  
NOTHING TO PURCHASE**

**LED BY: LYNN IHLENBURG**



**JOY LUTHERAN CHURCH**

**7045 SW 83<sup>RD</sup> PLACE, OCALA (OFF HWY 200)**



**BIBLE STUDY: STARVED BY AMY SEIFFERT**

*Are you in need of prayer; struggling with  
a problem; or just need some  
words of comfort?*

**Our Stephen Ministers  
are here to help.**

**They are available  
after each service at the Altar rail.**

**THIS WEEK'S PRAYER LIST**

|                                                                                                                                                                                                                                                                                                                                                                                                                                                                                                                                                                                                                                                                                                                                                   |                                                                                                                                                                                                                                                                                                                                                                                                                                                                                                                                                                |
|---------------------------------------------------------------------------------------------------------------------------------------------------------------------------------------------------------------------------------------------------------------------------------------------------------------------------------------------------------------------------------------------------------------------------------------------------------------------------------------------------------------------------------------------------------------------------------------------------------------------------------------------------------------------------------------------------------------------------------------------------|----------------------------------------------------------------------------------------------------------------------------------------------------------------------------------------------------------------------------------------------------------------------------------------------------------------------------------------------------------------------------------------------------------------------------------------------------------------------------------------------------------------------------------------------------------------|
| <p>John Cobb-Health<br/>                 Robert Cretul* – Cancer<br/>                 Lon Fairchild*-Cancer<br/>                 Violet Frey-Health Issues<br/>                 Guy Griemey*-Cancer<br/>                 John Henderson-Pain<br/>                 Susan Holmes-Health<br/>                 Linda Kraigenow-Recovery<br/>                 Linda Lushbaugh-Cancer<br/>                 Doris &amp; Raymond Neff*-Health issues<br/>                 Abby Owen*-Cancer<br/>                 Debbie Pequignot*-In Hospice<br/>                 Gay Saari*-Surgery for tongue cancer<br/>                 Dolly Schember-Health<br/>                 Brian Shull*-Special Circumstances<br/>                 Patti Spellman-Cancer</p> | <p>Nancy Spitzack*-Family Issues<br/>                 Debbie Spivey*-Stage 4 colon cancer<br/>                 Kristen Spivey*-Preparing to be a kidney donor<br/>                 Samantha Stafferi*-Possible Cancer<br/>                 Lee &amp; Edie Stewart – Health<br/>                 Helen Vance*-Cancer<br/>                 Maggie Vanek-Recovery<br/>                 Ken Warner*- Lung Cancer<br/>                 Dawn Winblad-Cancer Treatment</p> <p>Bertha Hendrickson-Assisted Living<br/>                 Cynthia Randall-Memory Care</p> |
|---------------------------------------------------------------------------------------------------------------------------------------------------------------------------------------------------------------------------------------------------------------------------------------------------------------------------------------------------------------------------------------------------------------------------------------------------------------------------------------------------------------------------------------------------------------------------------------------------------------------------------------------------------------------------------------------------------------------------------------------------|----------------------------------------------------------------------------------------------------------------------------------------------------------------------------------------------------------------------------------------------------------------------------------------------------------------------------------------------------------------------------------------------------------------------------------------------------------------------------------------------------------------------------------------------------------------|

*“Pray and let God worry.”*  
 —Martin Luther

| <b>ATTENDANCE</b> |                   |                 |            |
|-------------------|-------------------|-----------------|------------|
| <b>WEDNESDAY</b>  | <b>06/10/2026</b> | <b>6:30 PM</b>  | <b>27</b>  |
| <b>SUNDAY</b>     | <b>06/14/2026</b> | <b>10:00 AM</b> | <b>116</b> |



## NEXT WEEK'S DATELINE

June 15– June 21



**DATELINE LEGEND:** SH= SWENSON HALL; S=SANCTUARY; N=NARTHEX;  
OR= OUTREACH ROOM; MG=MEMORIAL GARDEN; CG=CHURCH GROUNDS; OC=OFF CAMPUS

| DATE         | TIME                | EVENT                                                 | LOC  |
|--------------|---------------------|-------------------------------------------------------|------|
| Mon. 6/22    | 9:30 AM             | Stephen Ministry                                      | SH   |
| Tue. 6/23    | 11:00 AM            | Beginners' Bible Study                                | SH   |
|              | 6:00 PM             | "Chronic Pain" Discussion Group                       | SH   |
| Wed. 6/24    | 9:00 AM             | Joyful Hands Ministry                                 | SH   |
|              | 6:30 PM             | Worship Service                                       | S    |
| Fri. 6/26    | 1:00-3:00 PM        | Cleaning Service                                      | S/SH |
| Sat. 6/27    | 10:00 AM            | Women's Enrichment-"Starved" Study Group              | SH   |
| Sun. 6/28    | Before & After Svc. | Fight Hunger Sunday                                   | N    |
|              | 10:00 AM            | Worship Service                                       | S    |
| Altar Angels |                     | Jean Groth, Rita Cowan, Sally Wheeler,<br>Vicki Valli | S    |
| Ambassador   |                     | Becky Spees                                           | N    |
| Fellowship   |                     | 3 Cooks + 3 Stooges                                   | N    |
| Counters     |                     | Doreen & David Robinson                               | SH   |
|              |                     |                                                       |      |
|              |                     |                                                       |      |

*"To worship God in spirit is the service and homage of the heart, and implies fear of God and trust in Him."*

*—Martin Luther*

## **WHEN IS JOY'S DEVOTIONAL BLOG POSTED?**

Every morning at 5:00 am, seven days a week.

You can start your day with the blog or check it anytime during the day. Even look back on previous blogs, they're all still available.

<https://joyocala.blog>

## **ALTAR FLOWERS TODAY ARE PLACED BY:**

**PEGGY DIETZ**

**IN MEMORY OF  
PARENTS**

**And**

**NORM HALVORSEN  
IN CELEBRATION OF  
JENNIE'S BIRTHDAY**



# FIGHT HUNGER SUNDAY

THE LAST SUNDAY OF EACH MONTH IS OUR FIGHT HUNGER SUNDAY.  
*YOU CAN HELP!*

- 1) **ELCA WORLD HUNGER-MONETARY DONATIONS USING YOUR NUMBERED DONATION ENVELOPES OR THE PEW ENVELOPES.**
- 2) **INTERFAITH FOOD BANK-NON-PERISHABLE FOOD ITEMS CAN BE PLACED ON THE CARTS PROVIDED**

***YOU MAKE A DIFFERENCE.***

**OUR NEXT FIGHT HUNGER SUNDAY DATE:**

**June 28<sup>th</sup>**



*Come early for worship and make...*

## **New Connections!**

Sunday, July 5

9:15am - 10:00am

in the church lobby



| THANKS TO TODAY'S MINISTRY TEAMS |                                                    |
|----------------------------------|----------------------------------------------------|
| Trinity Sunday                   | 10:00 AM                                           |
| Assistant Minister               | Mike Beaver                                        |
| Reader 1                         | Irene Henderson                                    |
| Reader 2                         |                                                    |
| Cross Bearer                     | Deacon Darlene Haines                              |
| Communion Assistant              | Vicki Valli                                        |
| Ushering Team                    | Faris                                              |
| Food & Fellowship                | Grapes of Wrap                                     |
| Altar Angels                     | Jean Groth, Rita Cowan, Sally Wheeler, Vicki Valli |
| Ambassador                       | Diane Knox                                         |
| Counters                         | Carolyn Cummings, Tom Ittner                       |

| OUR STAFF                |                   |
|--------------------------|-------------------|
| Administrative Assistant | Zsuzsanna Jobbagy |
| Director of Music        | Silas Daniel      |
| Choir Director           | Linda Aker        |
| Handbell Choir Director  | Melissa Daniel    |
| Treasurer                | Caroline Bernard  |
| Sexton                   | Carson Faris      |

**OFFICE HOURS:-**

Monday-Thursday 8:00 am—3:30 pm CLOSED ON FRIDAY



***FOR OUR MEMBERS & GUESTS***

Our bulletin and music for the hymns is available on our website and can be accessed by scanning the QR code on the LEFT.

It will take you to our Worship Tools : click on *HYMNS*  
You can view the music for the entire service on your phone or i-pad.

*Our Sanctuary is 'hearing aid-friendly' and also connects with Bluetooth devices."*



Scan the QR code for On-Line Giving Opportunities